

The background features a large, faint watermark of the University of Hawaii seal. The seal is circular and contains the text "UNIVERSITY OF HAWAII" at the top and "MĀLAMALAMA" in the center. Below the seal, the text "HAWAII 'I KA PONO" is visible.

Path for Student Success

Enhancing our Kauhale's
Institutional Planning &
Shared Governance Structures

HAWAI 'I COMMUNITY COLLEGE

Why?

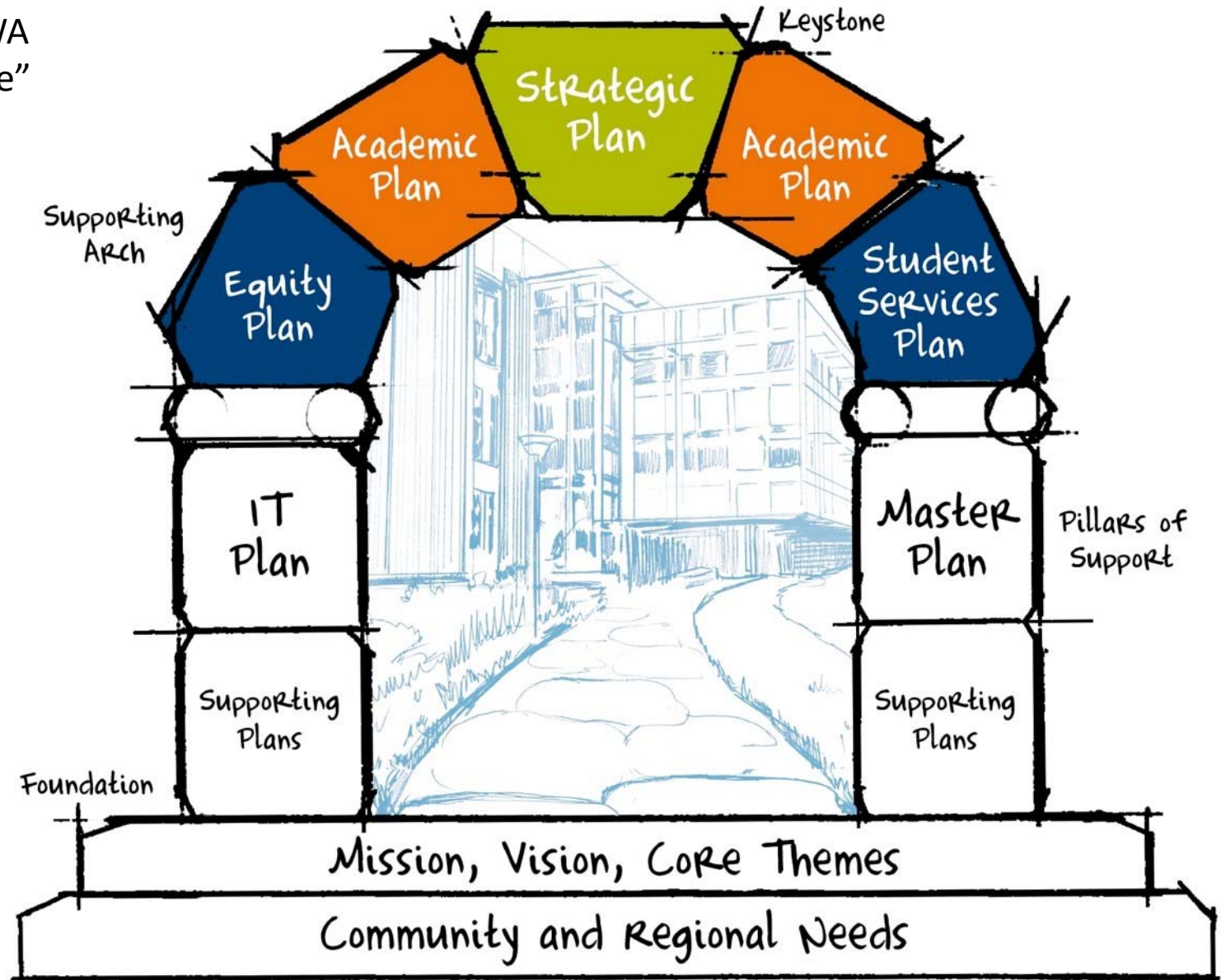
- Directing efforts to mission fulfillment
- Defining our commitment to student success
- Provide cohesiveness to our efforts
- Promote transparency
- Embrace participatory decision making

HAWAI 'I COMMUNITY COLLEGE

Honoring what we have

- College Council
- CERC
- Assessment Comm
- SEM
- Faculty Senate
- SGA
- Admin Team
- Leadership teams
- Ho'olulu Council
- Strategic Plan
- Academic master plan
- PUR/AUR (CERC reports)
- Budget plan
- Long term development plan (capital)
- Technology plan
- Various workplans....

*Bellevue College, WA
"Designing the future"



HAWAI 'I COMMUNITY COLLEGE

Shared Governance

Under the guidance of fully engaged Council, planning efforts will be strategic, transparent and participatory. The council will oversee the development of:

- College strategic plans
- Evaluation and assessment processes
- Resource allocation plan

Structure of Support

UH system (Chancellor)

College Council

Admin Team

Faculty Senate

SGA

Budget and Personnel Committee
(incl professional dev)

Facility/space

Technology

Ho'olulu Council

Student Success Committee

Programs & Units

Senate Comm

SGA Comm

HAWAI 'I COMMUNITY COLLEGE

Charter, College Council

Sample tasks College Council

- Establish long-term planning priorities for the College
- Establish yearly planning priorities for the College
- Establish and maintain charges and memberships for College planning standing committees
- Oversee a task force structure to accomplish specific planning tasks
- Align college planning with resource allocations

MEMBERS??

HAWAI 'I COMMUNITY COLLEGE

Charters, Student Success

Sample tasks Student Success

- Align class scheduling with demand and external factors (bus schedule, DOE schedule, etc.)
- Implement high touch/high visibility activities to improve enrollment, retention, and persistence
- Strengthen institution wide participation in outreach, recruitment, and advising
- Regularly review and revise policies to ensure streamlined access to services and to mitigate procedural barriers to student success
- Identify areas of intersection of services and facilitate coordination to increase efficiency and consistency

MEMBERS: VCAA and VCSA (co-chairs), Deans, DCs, Managers, Student Success Coordinator, Graduation Pathways Coordinator, Academic Senate Chair (?), College Council Chair (?), Student Government representative

HAWAI 'I COMMUNITY COLLEGE

Sample Resource Allocation Roles

- College Council, set institutional priorities, budget or resource principles and priority criteria
- Admin Team to rank requests and assign resources. Implements plan

Campus Roles in Resource Allocation



Faculty or Staff identifies needs. Request made and prioritized within area and division.



Resource Allocation Committee charges for request.
"Develops policy and priority criteria (budget, capital, technology)."
"Review and recommend prioritization of requests (budget, capital, technology)."



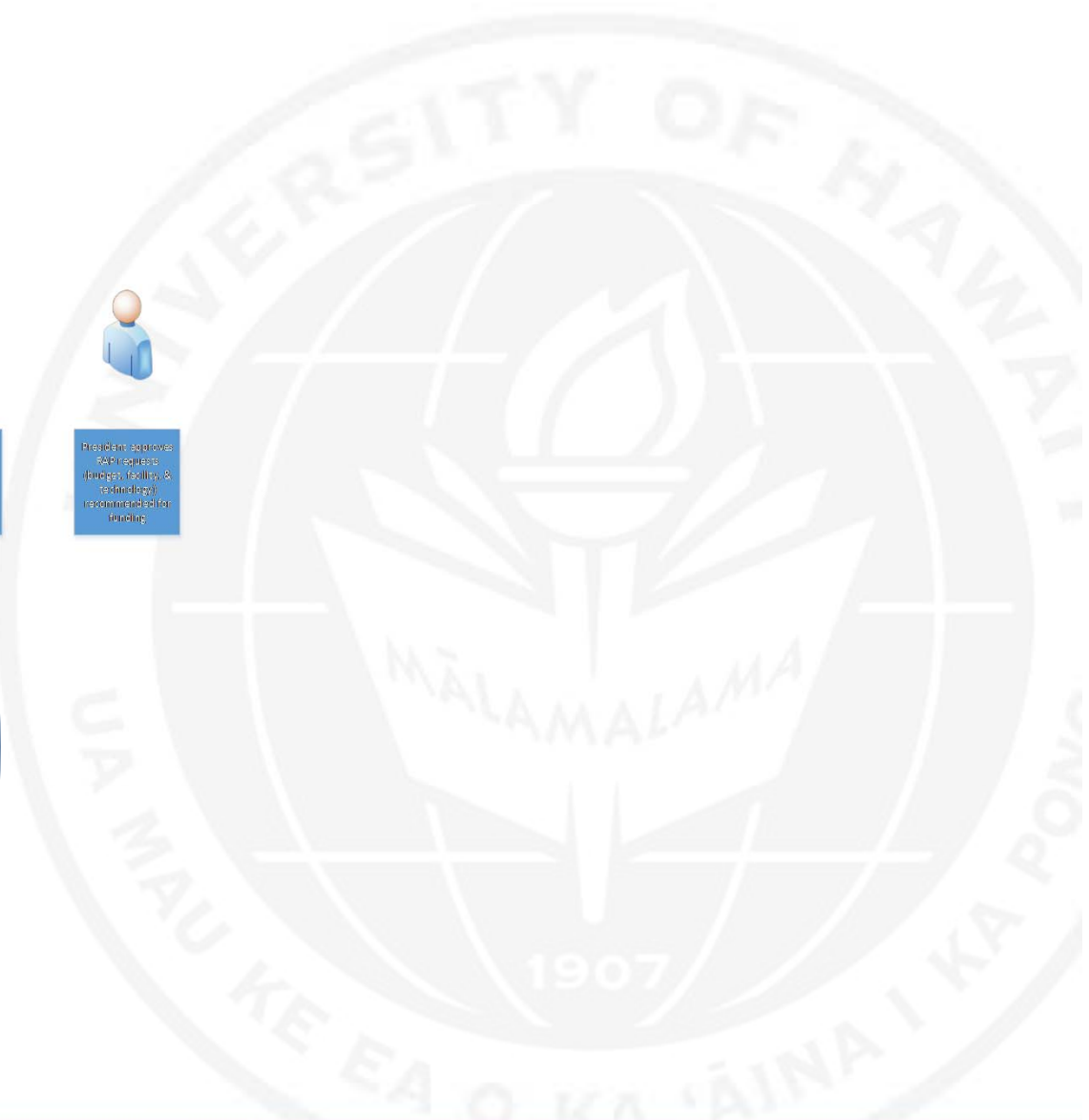
Senior Leadership ranks requests and assigns funding or funding plan.



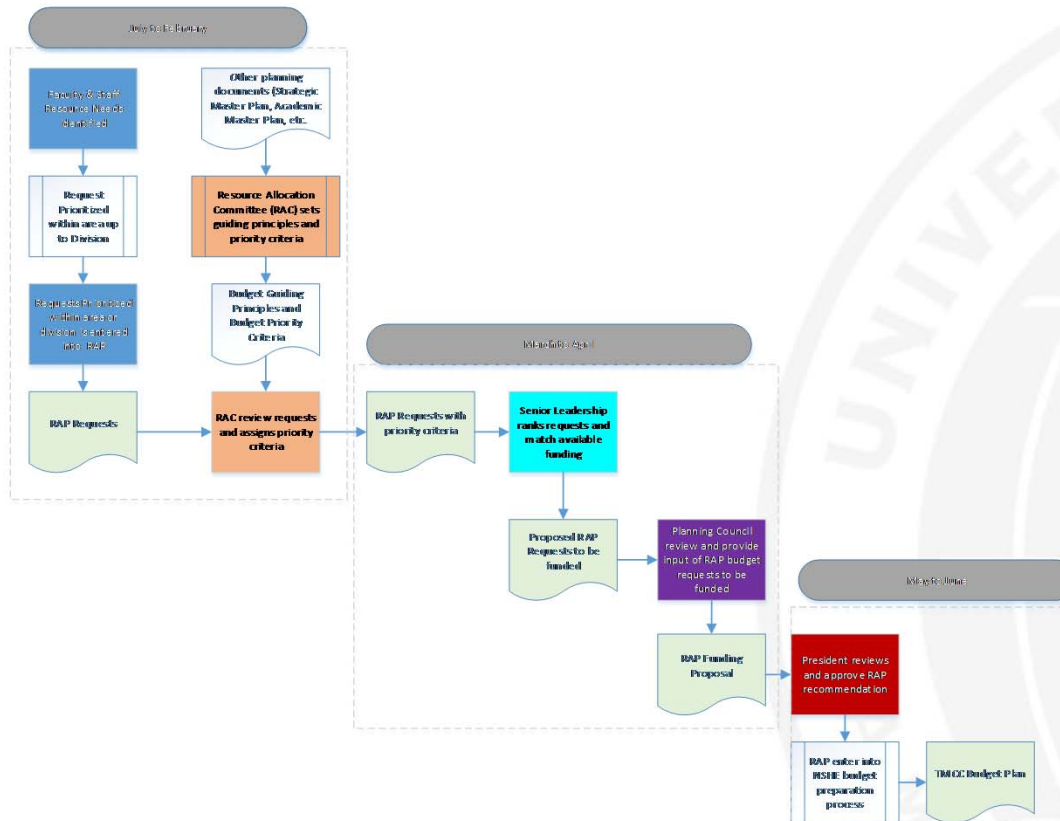
Planning Council reviews proposed RAR requests (budget, facility & technology) to be funded.



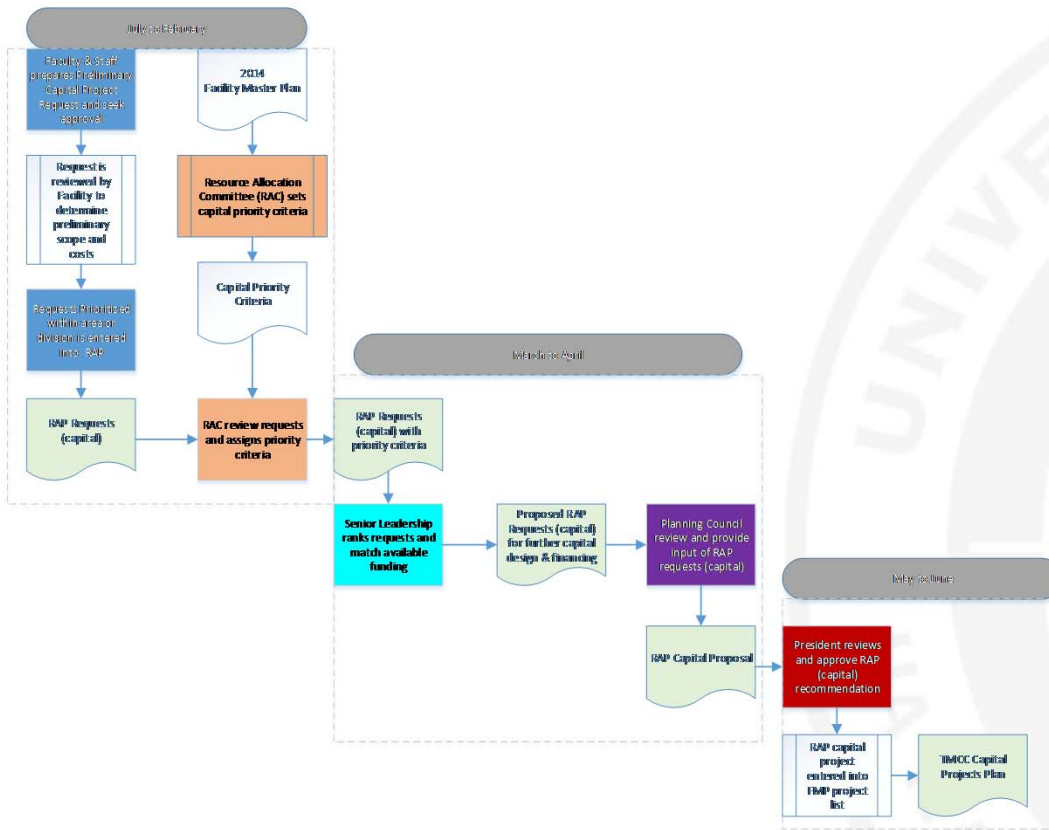
President approves RAR requests (Budget, facility, & technology) recommended for funding.



Budget Cycle



Facility Master Plan Cycle



Technology Strategic Plan Cycle

